

PLAN of SURVEY of  
 PART OF LOT 2, CONCESSION 7,  
 Geographic Township of Hinchinbrooke,  
 Now in the Township of Central Frontenac,  
 COUNTY of FRONTENAC

SCALE = 1:1000



T. C. MacDONALD SURVEYING  
 -2005-



**METRIC**

Distances Shown on This  
 Plan are in Metres and  
 can be Converted to Feet  
 by Dividing by 0.3048

I REQUIRE THIS PLAN TO BE  
 DEPOSITED UNDER THE  
 REGISTRY ACT

**PLAN 13R-17968**

RECEIVED AND DEPOSITED

DATE July 21<sup>st</sup> 2005

*Thomas Macdonald*  
 SIGNATURE

*Thomas Macdonald*  
 THOMAS G. MACDONALD  
 ONTARIO LAND SURVEYOR

LAND REGISTRAR FOR THE  
 REGISTRY DIVISION OF  
 (13) FRONTENAC

PART	SCHEDULE				
	DT	CON.	INST. No.	PIN No.	AREA
1			729788	36152-0054	6713 sqm
2					3.267 Ha
3	2	7	729787	36152-0173	8.898 Ha
4					1.316 Ha

PART 1 COMPR  
 PARTS 2, 3, &

S PART OF THE LANDS DESIGNATED BY PIN 36162-0064  
 COMPRISE ALL OF THE LANDS DESIGNATED BY PIN 36162-0173

LOT 2

PART 1

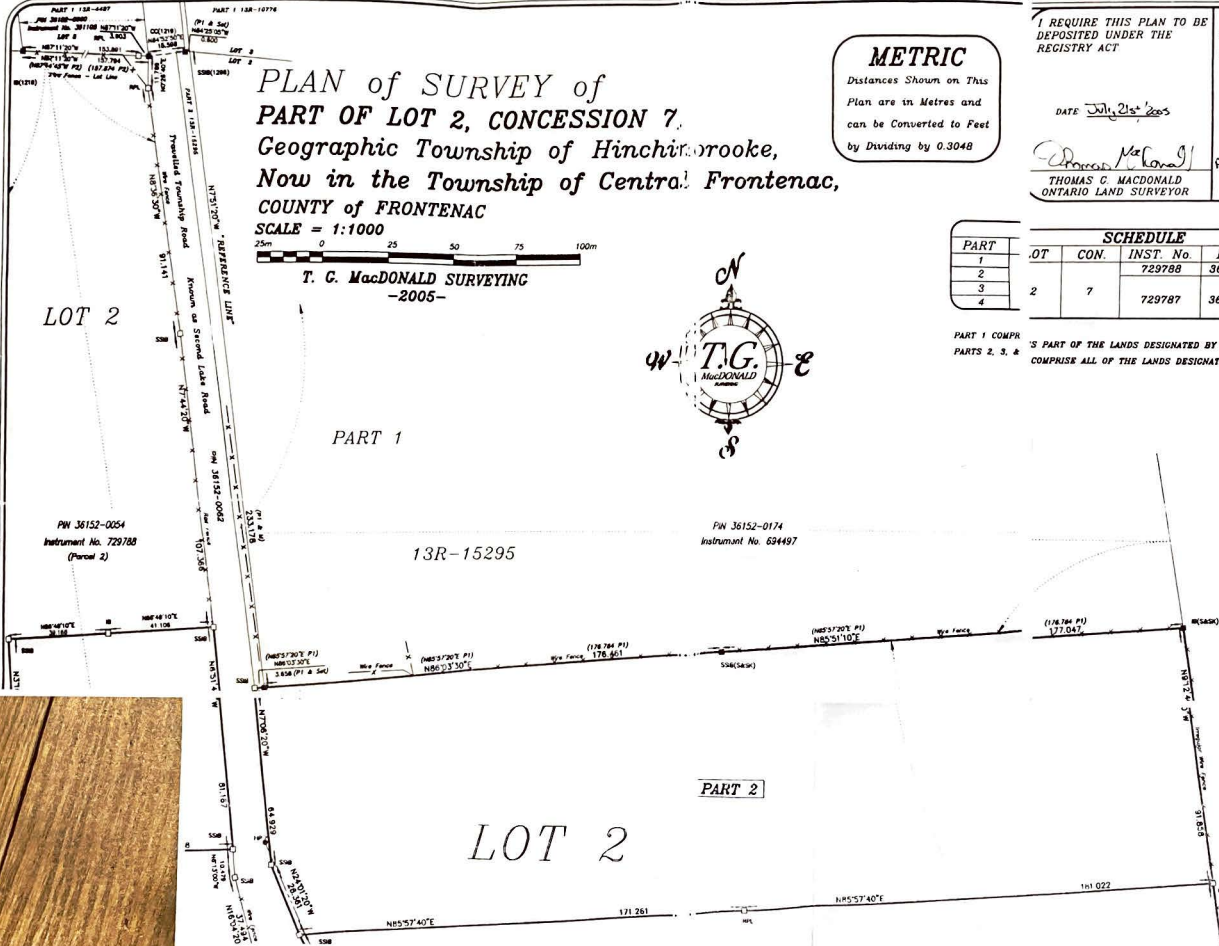
13R-15295

PW 36152-0174  
 Instrument No. 624497

PW 36152-0054  
 Instrument No. 729788  
 (Parcel 2)

PART 2

LOT 2



COUNTY of FRONTENAC

SCALE = 1:1000



T. G. MacDONALD SURVEYING  
-2005-



SCHEDULE				
PART	LOT	CON.	INST. No.	PIN No.
1	2	7	729788	36152-0054
2			729787	36152-0173
3				
4				

PART 1 COMPRISES PART OF THE LANDS DESIGNATED BY PIN 36152-006  
PARTS 2, 3, & 4 COMPRISE ALL OF THE LANDS DESIGNATED BY PIN 361

PART 1

13R-15295

PIN 36152-0174  
Instrument No. 694497

PART 2

LOT 2

